

All bath components are factory-installed. If you wish to relocate the blower for practical or accessibility reasons, follow these instructions. Failure to follow these instructions could result in serious personal injury or and/or property damage. Failure to follow these instructions will void the warranty. Oceania Baths can not be responsible for any damage, loss, cost, expense or liability relating to failure to follow these instructions.

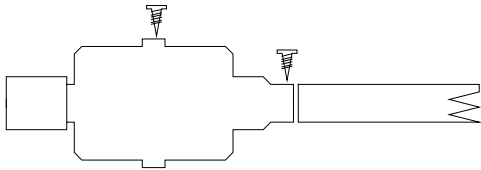
LOCATION:

Choose a location not requiring more than 12 ft. (3.66 m) of piping. It is possible to have 15 ft. (4.57 m) of piping if there are no more than twelve soft (45° elbows) directional changes. Choose the shortest possible distance between bath and blower to maintain the system's performance. Sufficient space and ventilation is necessary around the blower for proper air circulation.

NOTE: Ambient air temperature should be between 72°F (20°C) and 86°F (30°C). Easy access to blower must remain possible at all times for servicing.

BLOWER INSTALLATION:

Blower may be relocated in either a vertical or a horizontal position. Use only 1 1/2" (3.8 cm) ABS or PVC non-flexible pipes and adaptors to extend air line; the use of flexible pipes is not recommended (except when factory installed). Whenever possible, use two 45° elbows to change the direction of your piping. All air line pipe connections should be glued together except for the connection to the blower which is secured in place with a screw (fig 1).



The blower must be mounted at least 4" (10 cm) from the floor. Your bath is delivered with a 15 ft. (3 m) cord to connect the electronic keypad and water detectors to the blower.

FOLLOW THESE STEPS:

- 1) Turnoff power supply to the bath tub. DANGER-make certain that all power to the bath tub has been turned off. Try turning on the blower to make certain that it does not start up.
- 2) Disconnect power supply to the blower. Unplug the keypad wire and the water detector wire from the blower.
- 3) With a screwdriver remove the screw holding the 1 1/2" ABS pipe to the blower and the screw holding the blower to the bath tub.
- 4) Move the blower to its new position and fasten with 2 screws.
- 5) Reconnect the keypad wire and water detector wire to the blower.
- 6) Reconnect your power supply.
- 7) Turn on the blower with the keypad and test that all the buttons are working properly.
- 8) Install piping according to the blower installation instructions above. Do not glue the pipe to the blower. Use a screw to hold the pipe in place.

NOTE: It is recommended not turning on the blower for 12 hours after the pipes have been glued together.